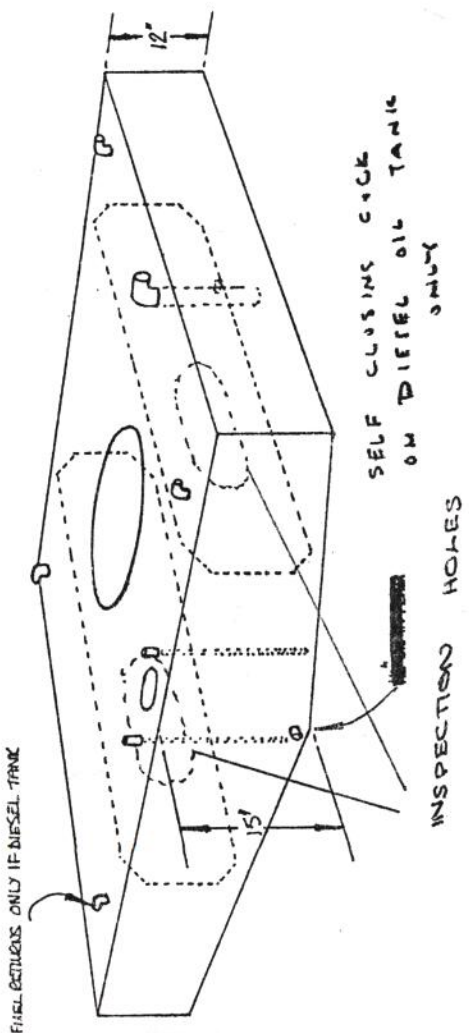
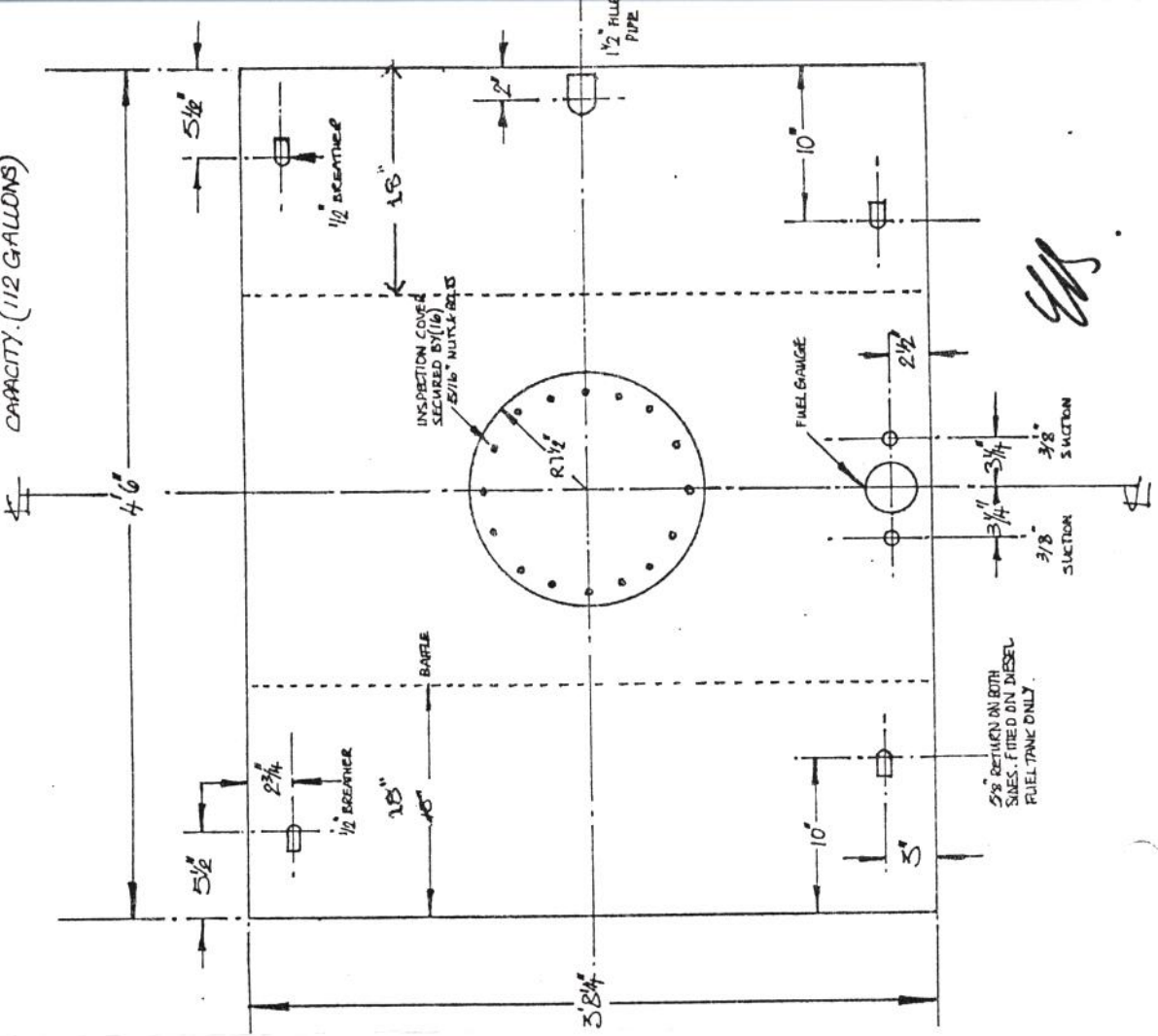


P31 & P32-137

CODE REFERENCE

FUSES -	GUAGE OF WIRE.	FUSES +	GUAGE OF WIRE.
1. GREEN/BROWN.	14	25. PURPLE.	35
2. GREEN.	28	26. YELLOW.	28
3. BLACK.	14	27. RED.	14
4. WHITE.	14	28. PURPLE.	14
5. BLACK.	14	29. RED.	14
6. BLACK.	44	30. BROWN/YELLOW	44
7. BLUE.	14	31. RED BLACK.	14
8. BLUE.	14	32. RED.	44
9. BLUE.	44	33. RED.	14
10. BLUE/YELLOW.	14	34. RED/WHITE	28
11. BLUE/WHITE.	28	35. RED.	14
12. BLACK.	14	36. PURPLE.	35
13. BLACK.	44	37. RED.	14
14. BLACK.	14	38. PURPLE.	35
15. BLACK.	14	39. RED.	28
16. GREEN.	28	40. RED.	28
17. BLACK.	28	41. RED.	44
18. BLUE.	28	42. RED.	44
19. BLACK.	44	43. RED.	14
20. BLACK.	44	44. RED.	14
21. BLACK.	14	45.	
22. BLUE.	14	46.	
23.		47.	
24.		48.	

MARINE PROJECTS LTD.
 31 FUEL TANK SIZES 24 FEB. 75
 PETROL (GALVANISED 16 GAUGE) 10
 DIESEL (MILD STEEL 16 GAUGE) 10
 DIMENSIONS SAME FOR BOTH TANKS
 CAPACITY (112 GALLONS)

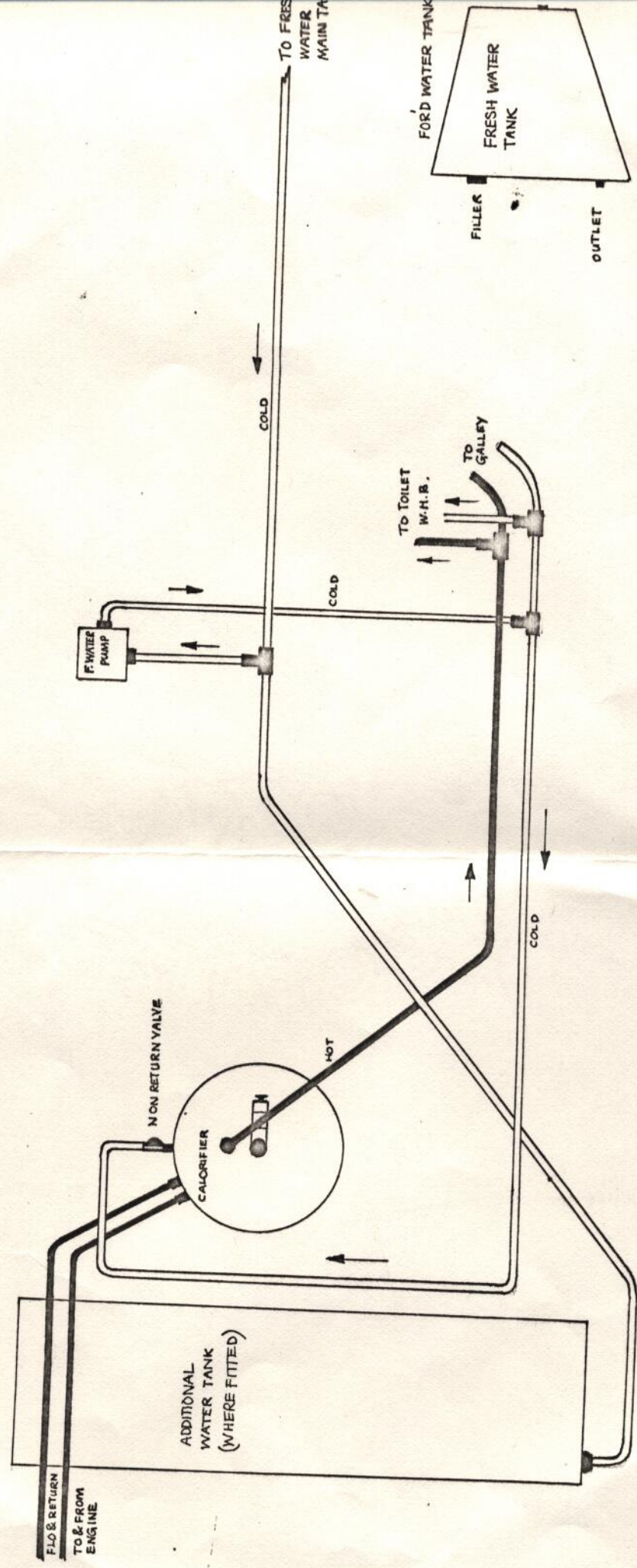


TANKS TO BE TESTED HYDRAULICALLY
 TO 516. PER SQUARE INCH

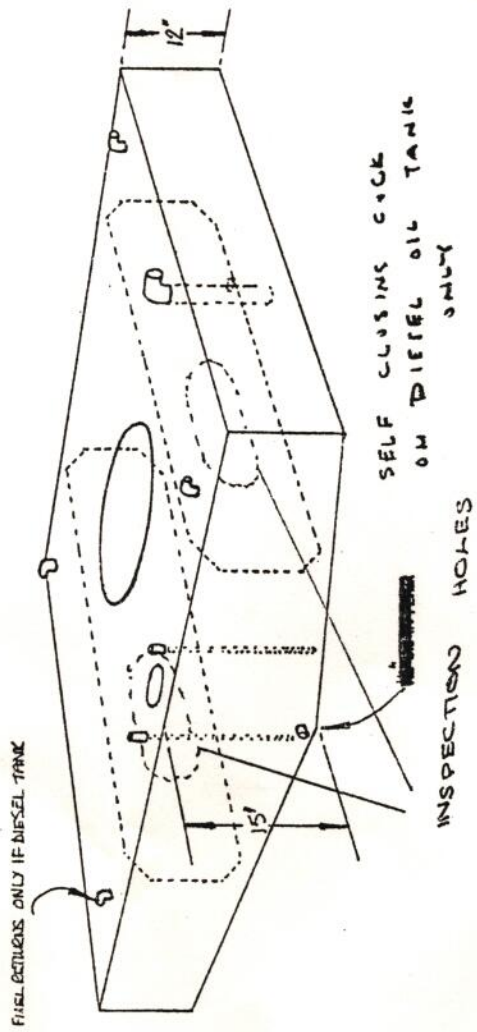
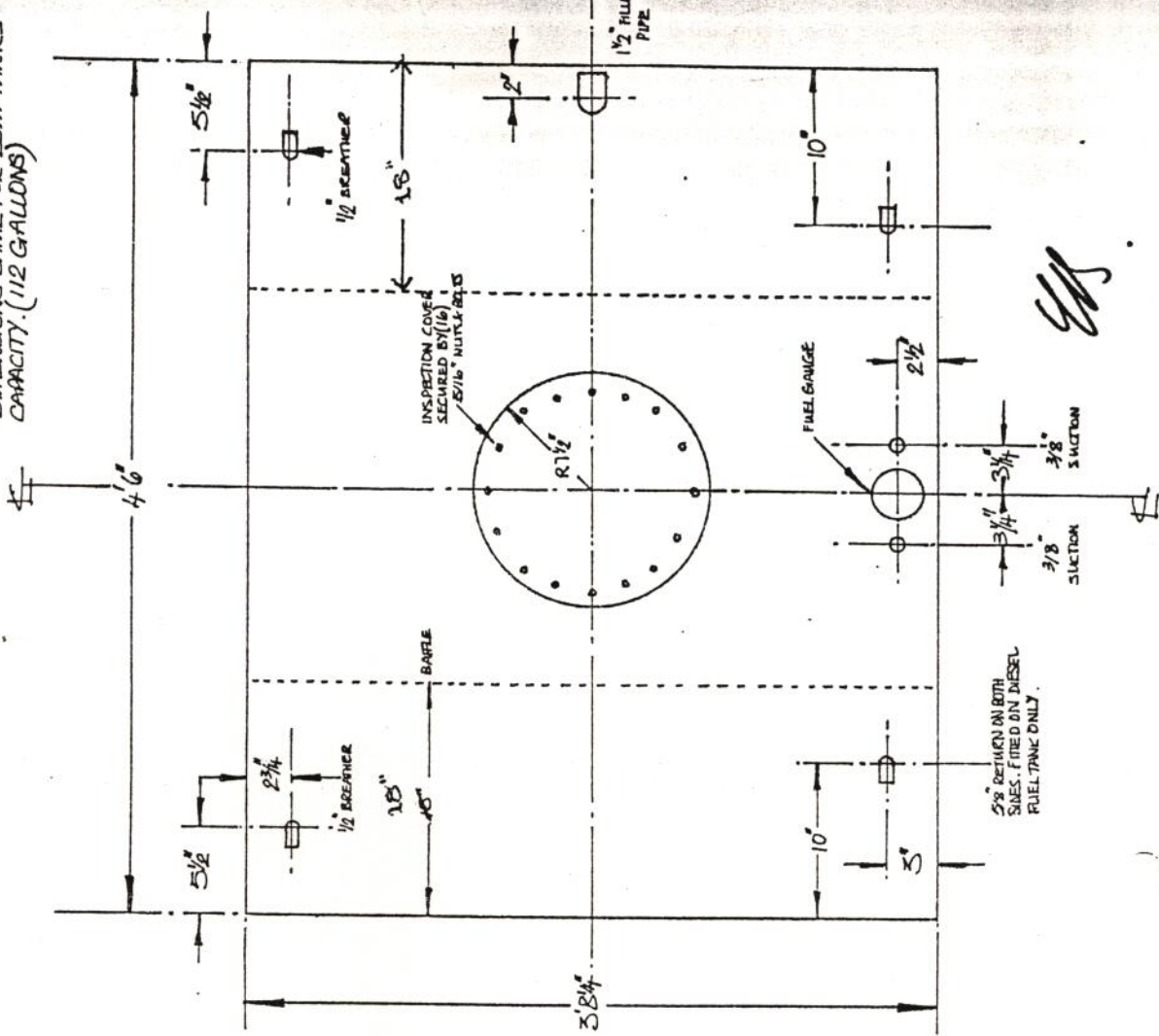
DESIGNED BY
 MARINE PROJECTS LTD.
 DRAWING OFFICE

THIS DRAWING
 IS NOT TO BE USED
 FOR PRODUCTION
 PURPOSES

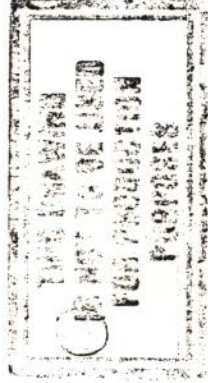
HOT & COLD WATER SYSTEM. P.31 1/8/73
SOLID BLACK LINES INDICATE HOT WATER SYSTEM



MARINE PROJECTS LTD.
 31 FUEL TANK SIZES . 24. FEB. 75
 PETROL (GALVANISED 16 GAUGE) 10
 DIESEL (MILD STEEL 16 GAUGE) 10
 DIMENSIONS SAME FOR BOTH TANKS
 CAPACITY: (112 GALLONS)



TANKS TO BE TESTED HYDRAULICALLY
 TO 516. PER SQUARE INCH



COLD WATER SYSTEM P.31 1./8./73

