

Welcome To The River Nene

The River Nene is an important regional navigation linking the Grand Union Canal to the River Great Ouse, via the Middle Levels.

Originally a commercial navigation it is now used almost entirely for recreation. Flowing through Northamptonshire, Cambridgeshire, Lincolnshire and bordering Norfolk, the Nene gives contrasting views of eastern England.

In Northamptonshire the river meanders through farmland and the industry of Northampton, Wellingborough and Irthlingborough. Further downstream there are numerous traditional stone villages and quiet country churches for which the 'county of squires and spires' is famous.

The River Nene rises at sources near Badby, Naseby and Yelvertoft, and becomes navigable at Northampton where these tributaries combine. Our navigation starts at the junction with the Northampton Arm of the Grand Union Canal near Cotton End Lock and extends 147 km (91 miles) to the sea, ending at Bevis Hall just upstream of Wisbech.

Peterborough dominates the route through Cambridgeshire with the city's cathedral visible on the horizon across great stretches of fenland. The Nene was tidal to Peterborough until the construction of a tidal lock and sluice at the Dog in a Doublet in 1937.

The tidal Nene flows through parts of Lincolnshire to the once bustling port of Wisbech, with its Dutch style waterfront architecture, and on to the port at Sutton Bridge. The final leg enters the Wash between two towers known as "the lighthouses".



Crozier moored up and anglers on the River Nene at Fotheringhay

Important Information

Speed Limits

A speed limit of 11.2kmph (7mph) applies throughout the navigation. However, care must be taken at all times in the interests of safety as well as to protect the water environment and wildlife.

Locks

There are 38 locks between Northampton and Peterborough. Typical lock dimensions are 26m long and 4.6m wide. Most of these locks have pointing doors at the upstream end and vertical guillotine gates at the lower end. The guillotine gates are locked and Environment Agency navigation keys are required to operate them. A windlass to fit 2.6cm square is required to operate the paddles. Navigation keys and windlasses can be purchased by licensed users at the following locations on the River Nene: Gayton Marina, Eastern Marine (formerly Ken Yates), Stewart Holmes at Stanground, Peterborough, Environment Agency Aqua House in Peterborough and Dog in a Doublet Lock.

Moorings

Boats must not be moored within 36 metres (118ft) of any lock, sluice, weir or water intake except when navigating through a lock. In some cases such as Dog in a Doublet Lock, Bedford Road Sluice (Northampton) and Weston Favell (Northampton), mooring is prohibited for 100 metres (328ft) on both sides of the structure. Please note that the landing stages at either side of a lock are not to be used for overnight mooring. The Environment Agency does not provide permanent or residential moorings on the River Nene, if you are looking to base a boat on the river on a longer term basis we advise you to contact the marinas directly and check availability with them or request to be entered onto their waiting lists. If you are a Riparian landowner and are looking to construct a mooring on your land we advise you to contact our Customer Contact Centre first to obtain further information on the consents and permissions required from us.

Tidal Passage

The river is tidal for 45kms (28 miles) downstream of the Dog in a Doublet Lock. Registered craft can pass through the lock every day from 07.30am until official sunset time and must telephone (01733) 202219 to arrange passage in advance of arrival.

Warning: There is a strong run on the flood and ebb tides in Wisbech and craft should avoid these periods.

Headrooms

Several structures on the River Nene, e.g. bridges and guillotine gates, have inverted gauge boards fitted up and down stream. No attempt should be made to pass under these structures if the indicated height is less than the air draft of the craft. It is the responsibility of all boat skippers to ensure that there is sufficient headroom to permit safe passage.

Strong Stream Advice

The River Nene and Great Ouse are unique in the region because we 'reverse the locks' during flood events and times of high flows: an operation which closes the affected locks to navigation. 'Strong Stream Advice' procedure advises boat users that the locks are 'reversed' and we strongly advise against attempting to navigate. When Strong Stream Advice is in force, signs along the length of the river are activated. A number of boat clubs and marinas also display red flags to warn river users Strong Stream Advice has been issued.

River users are also able to telephone our Floodline Information Service to hear a recorded message which will inform users whether Strong Stream Advice is on or off. To do this please follow these steps:

1. Call Floodline, on 0845 988 1188 – You will be welcomed to Floodline and offered different touch-tone options.
2. Choose option '1' by dialling '1' on your phone to 'listen to pre-recorded information for flood warnings currently in force'.
3. Then simply enter one of the following quick dial Strong Stream Advice numbers:
River Nene 032112
River Great Ouse 033211

Stanwick Lakes

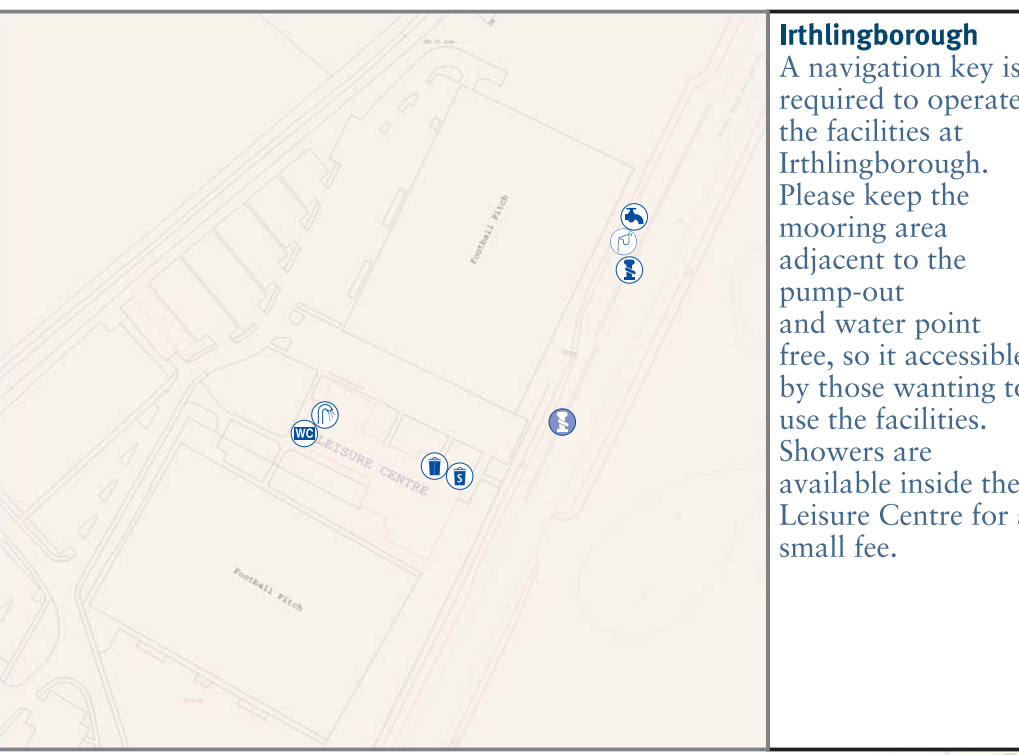
Stanwick Lakes is a unique countryside attraction in the heart of the Nene Valley in Northamptonshire. It has been recognised as a Site of Special Scientific Interest (SSSI) and acknowledged as one of the most important areas for wintering waterfowl in the UK.

As well as being an excellent place to see the abundant wildlife of the Nene Valley it offers access to the attractive local countryside and a wide range of leisure activities and facilities. These include adventure trails, playgrounds, assault courses, cycle paths, fishing as well as a comprehensive programme of special events throughout the year.

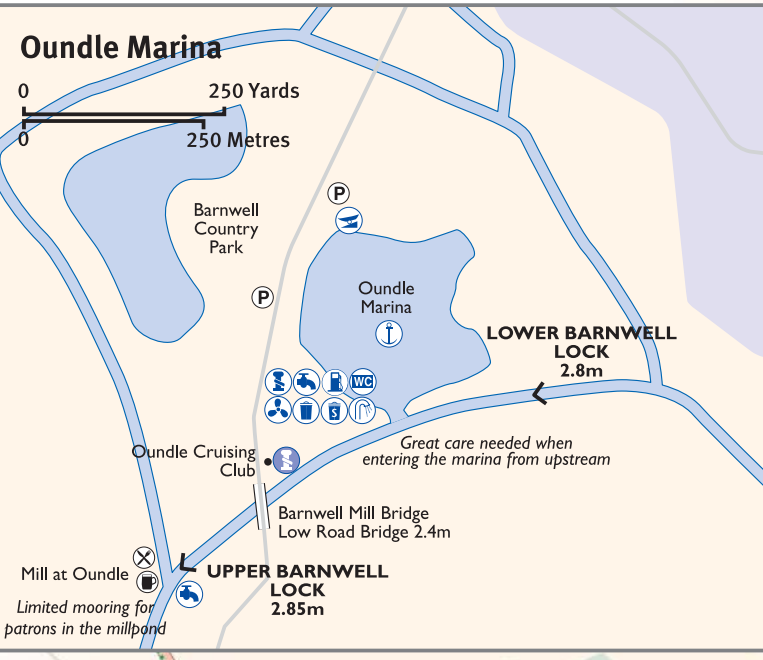
For more information see www.stanwicklakes.org.uk.



Reflection of Fotheringhay Church in the River Nene



Irthlingborough
A navigation key is required to operate the facilities at Irthlingborough. Please keep the mooring areas adjacent to the pump-out and water point free, so it is accessible by those wanting to use the facilities. Showers are available inside the Leisure Centre for a small fee.



Oundle Marina
From Oundle Marina the charming historical town centre is just a 10 min walk offering shops and services.

River Nene Regional Park
The River Nene Regional Park is a partnership organisation co-ordinating green infrastructure projects in Northamptonshire and Peterborough. Through these projects which create and enhance multi-functional green spaces, a strategic network of green infrastructure is being developed.
Activities focus on the River Nene and its tributaries, and on identified Green Infrastructure corridors (priority investment areas). Projects include woodland and wetland creation, regeneration of urban parks, creation of footpaths and cycleways, improving recreation facilities, environmental education and heritage facilities, improving the river environment for recreational users, and various innovative projects including the creation of a walkway through the forest canopy.
For more information, see www.rnrp.org.uk

Fotheringhay is another village worth visiting, the castle was the site where Mary, Queen of Scots was imprisoned and eventually executed. The Castle was also the birthplace of Richard III.

Cream teas are available in Wadenhoe Village Hall next to the pub on Sundays.

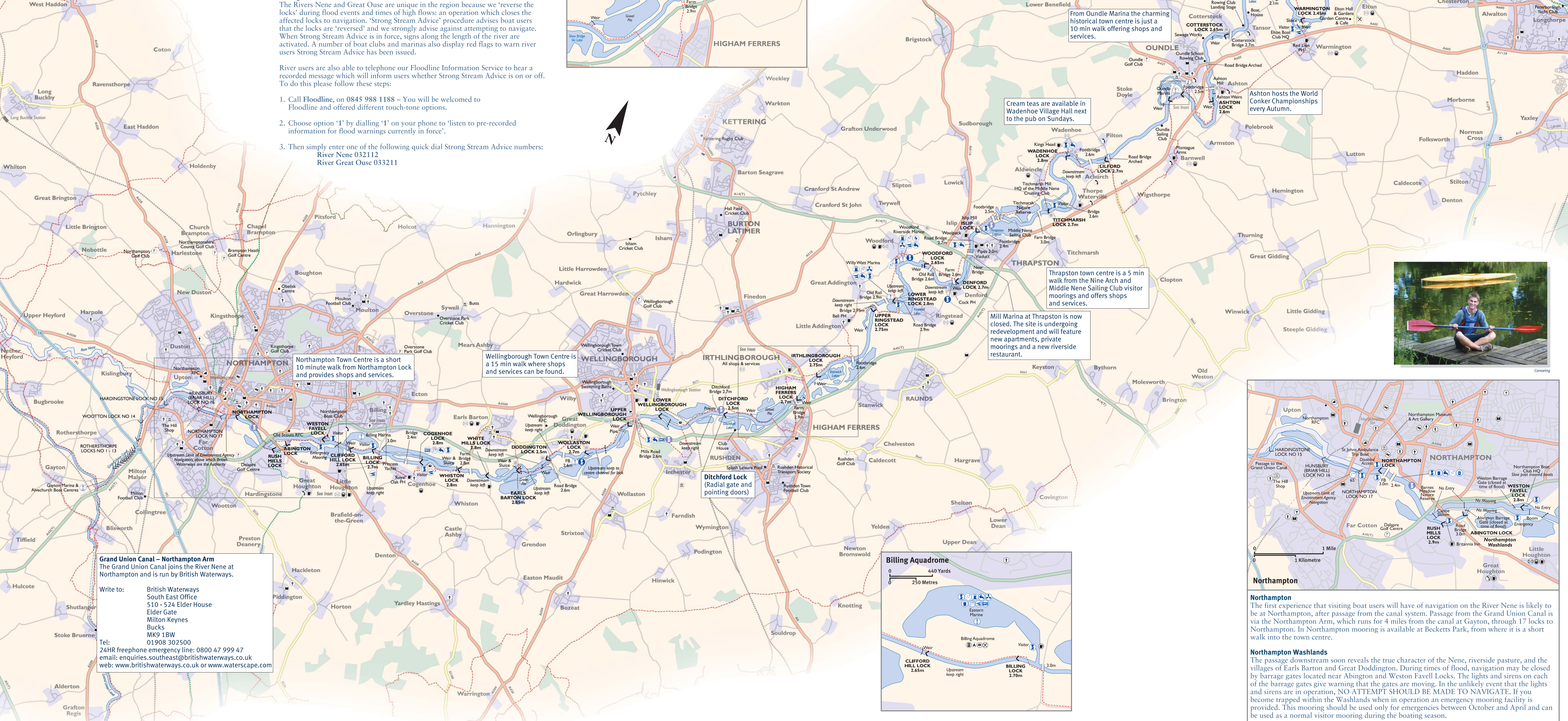
Ashton hosts the World Conker Championships every Autumn.

Thrapston town centre is a 5 min walk from the Nine Arch and Middle Nene Sailing Club visitor moorings and offers shops and services.

Mill Marina at Thrapston is now closed. The site is undergoing redevelopment and will feature new apartments, private moorings and a new riverside restaurant.



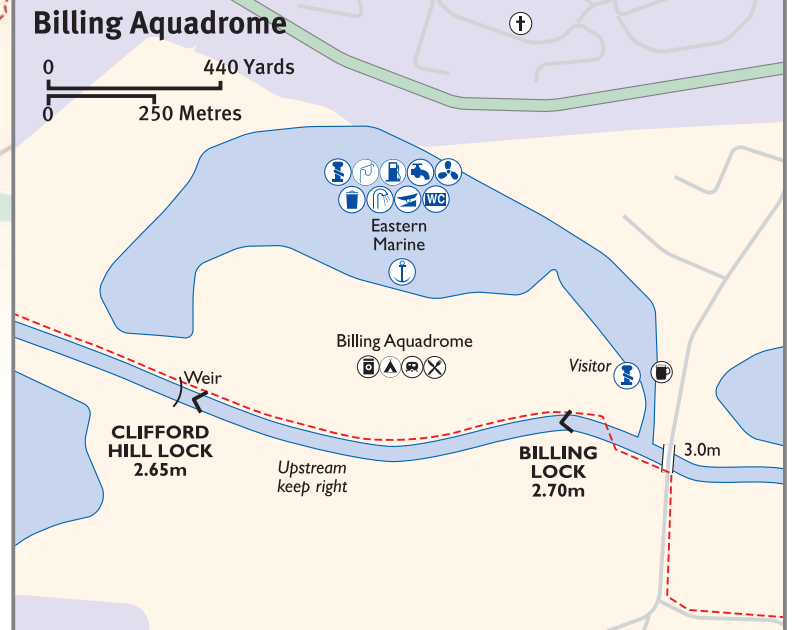
Canoeing



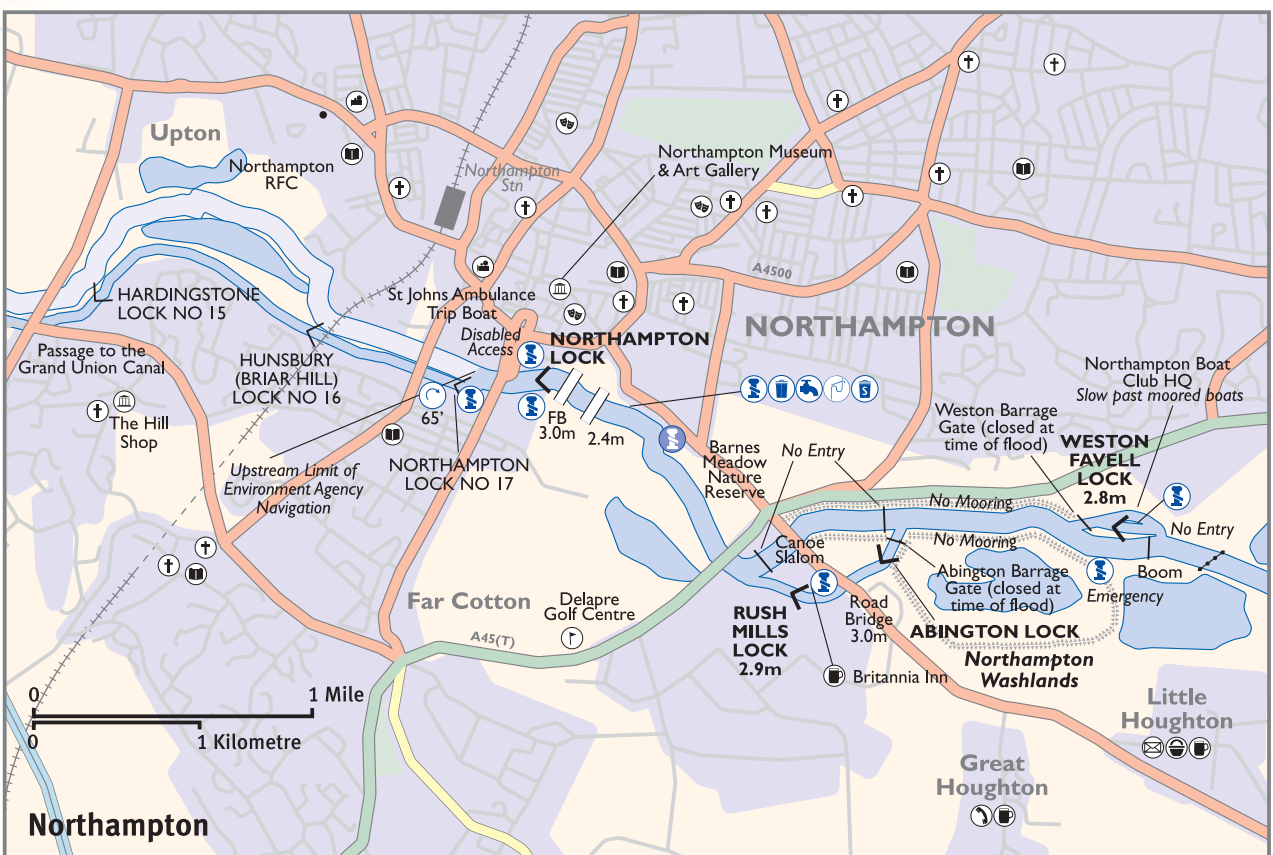
Northampton Town Centre is a short 10 minute walk from Northampton Lock and provides shops and services.

Wellingborough Town Centre is a 15 min walk where shops and services can be found.

Ditchford Lock (Radial gate and pointing doors)

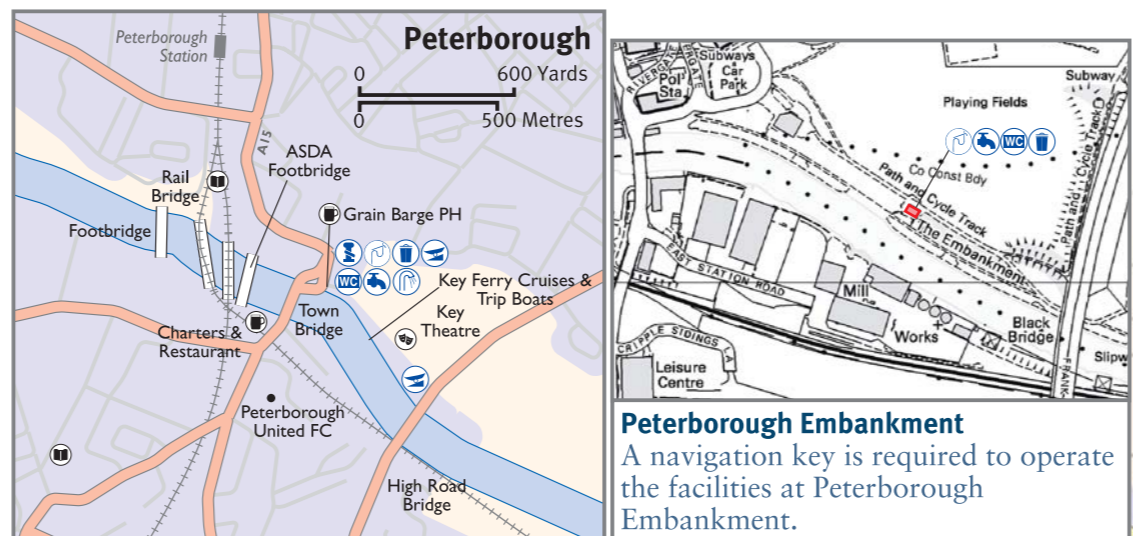
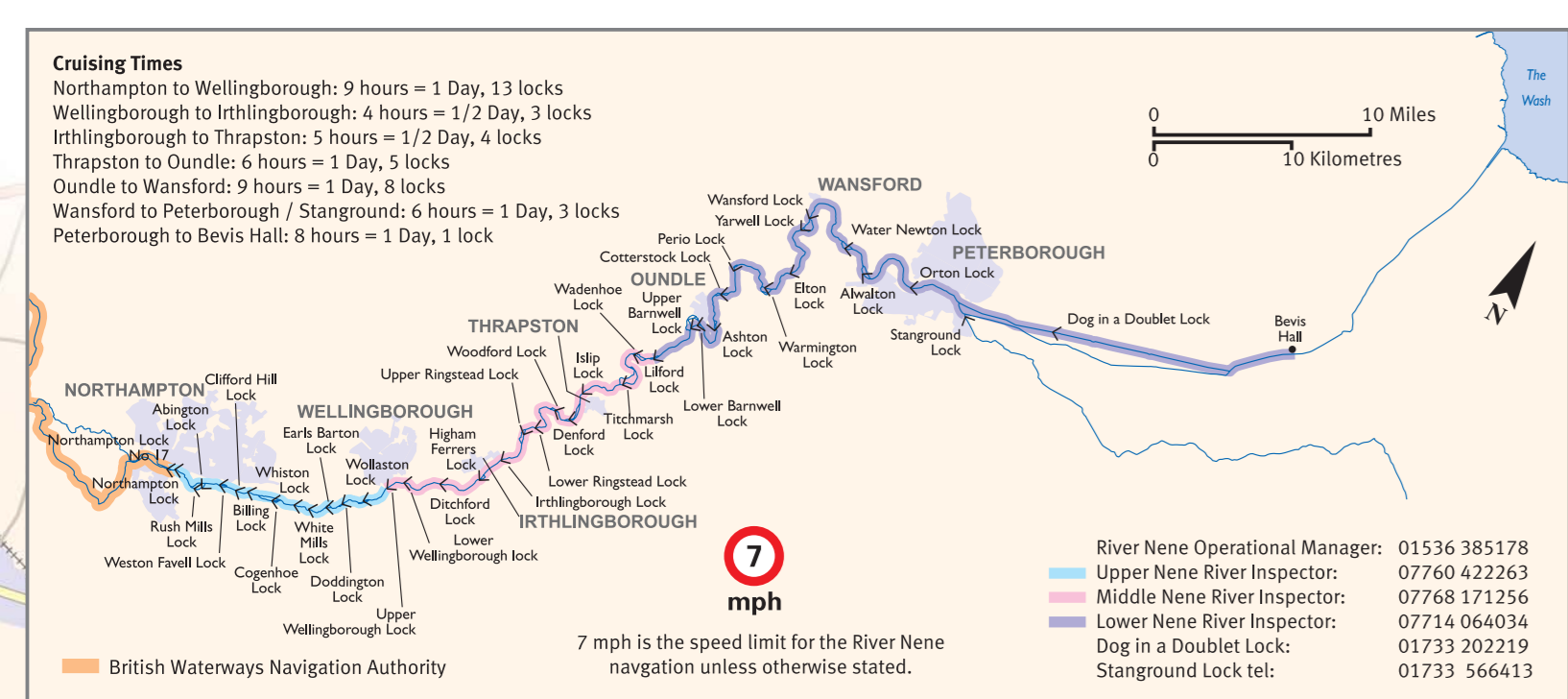


Grand Union Canal – Northampton Arm
The Grand Union Canal joins the River Nene at Northampton and is run by British Waterways.
Write to: British Waterways
South East Office
510 - 524 Elder House
Elder Gate
Milton Keynes
Bucks
MK9 1BW
01908 302500
Tel: 24HR freephone emergency line: 0800 47 999 47
email: enquiries.southeast@britishwaterways.co.uk
web: www.britishwaterways.co.uk or www.waterscape.com

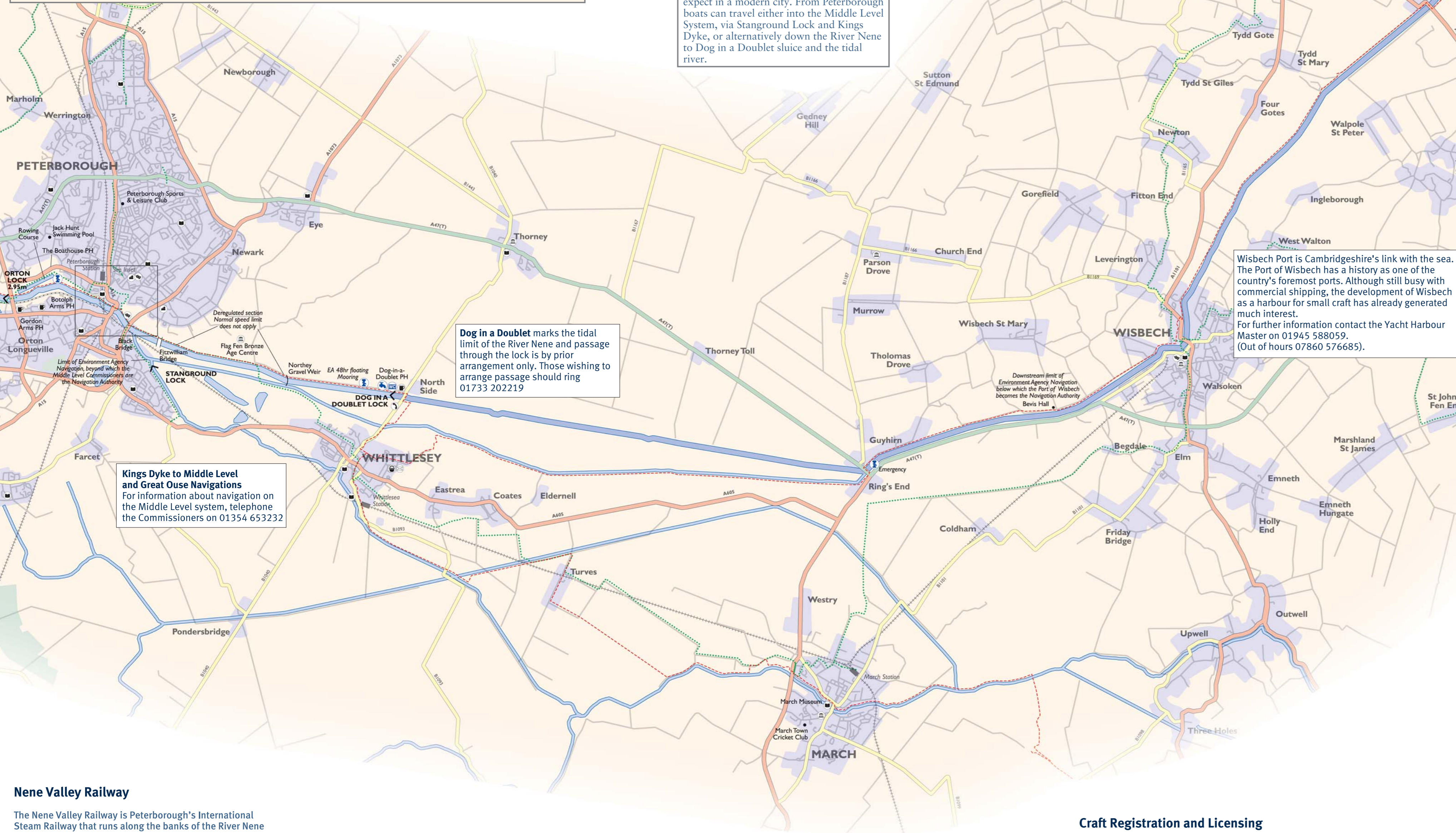


Northampton
The first experience that visiting boat users will have of navigation on the River Nene is likely to be at Northampton, after passage from the canal system. Passage from the Grand Union Canal is via the Northampton Arm, which runs for 4 miles from the canal at Gayton, through 17 locks to Northampton. In Northampton mooring is available at Becketts Park, from where it is a short walk into the town centre.

Northampton Washlands
The passage downstream soon reveals the true character of the Nene, riverside pasture, and the villages of Ears Barton and Great Doddington. During times of flood, navigation may be closed by barrage gates located near Abington and Weston Favell Locks. The lights and sirens on each of the barrage gates give warning that the gates are moving. In the unlikely event that the lights and sirens are in operation, **NO ATTEMPT SHOULD BE MADE TO NAVIGATE**. If you become trapped within the Washlands when in operation an emergency mooring facility is provided. This mooring should be used only for emergencies between October and April and can be used as a normal visitor mooring during the boating season.



Peterborough City embankment provides easy access to the city centre, which includes all of the shops and services one would expect in a modern city. From Peterborough boats can travel either into the Middle Level System, via Stanground Lock and Kings Dyke, or alternatively down the River Nene to Dog in a Doublet sluice and the tidal river.



- Legend**
- M1, A1432: Motorway/Junction Number
 - A1432: Primary Road
 - A1432: A Road
 - B102: B Road
 - Minor Road
 - Rail Line/Tunnel
 - Nene Valley - Heritage Railway
 - Rail Station
 - Canal Tunnel
 - Embankment
 - Long Distance Footpath
 - Cycle Track
 - Lock
 - Weir
 - Power Cable
 - Pipes
 - Urban Area
 - Forest/Park
 - Tidal Water
 - Unnavigable River
- Navigational Symbols**
- Boat Yard
 - Marina
 - Mooring - Public
 - Mooring - Private
 - Mooring - Proposed new or improved/extension
 - Fuel
 - Power
 - Pump Out
 - Refuse Disposal
 - Elsan/Chemical Toilet Disposal
 - Showers
 - Slipway
 - Toilet
 - Water Supply
 - Winding Hole
- Other Symbols**
- Camp Site
 - Canoeing
 - Caravan Site
 - Church
 - Cinema
 - Golf Course
 - Laundrette
 - Library
 - Mill
 - Museum
 - Parking
 - Post Office
 - Restaurant
 - Pub
 - Shop
 - Snacks
 - Supermarket
 - Telephone
 - Theatre
 - TIC

This map is printed on PreTex paper. We have chosen PreTex paper as it is splash and tear resistant. PreTex is bio-degradable.

Would you like to find out more about us, or about your environment?

Then call us on 08708 506 506 (Mon-Fri 8-6)

email enquiries@environment-agency.gov.uk or visit our website www.environment-agency.gov.uk

Incident hotline 0800 80 70 60 (24hrs) Floodline 0845 988 1188



Nene Valley Railway

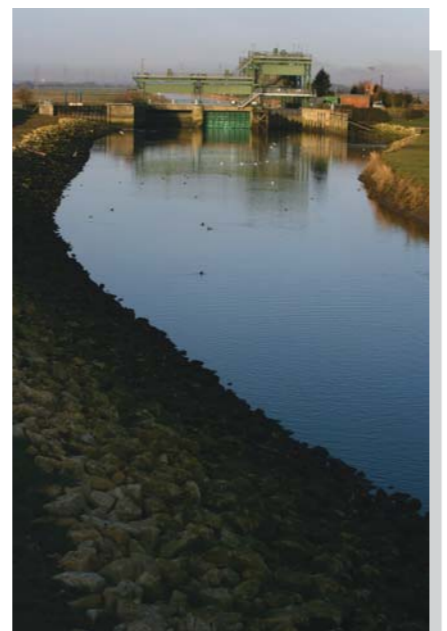
The Nene Valley Railway is Peterborough's International Steam Railway that runs along the banks of the River Nene for 7 miles between the city of Peterborough and Yarwell Junction. NVR is the home of "Thomas" who operates frequently throughout the year. It is also used by film companies and many famous productions have been made there, along with corporate events, weddings, driving experience courses, Travelling Post Office operations, special event days and the all important Santa Specials.

For information on train operations and all other enquiries:
 Tel (01780) 784444
 Fax (01780) 784440
 email nvrorg@nvr.org.uk

Or visit the Railway's website www.nvr.org.uk

Walking and Cycling

The Nene Way is a long distance footpath that tracks the River Nene from close to its source at Badyby out towards The Wash terminating at Sutton Bridge. It covers some 177km or 110 miles and is clearly waymarked. Opened in the 1980's, more information can be found on this route on the Ramblers Association website: www.ramblers.org.uk or by contacting the Local Authorities of Northamptonshire County Council, Peterborough City Council and Cambridgeshire County Council along the route. Many opportunities also exist for cycling along the River Nene valley, parts of which connect with the National Cycle Network. More information can be found from Sustrans see: www.sustrans.org.uk



Craft Registration and Licensing

We are the navigation authority for several rivers within the Anglian Region, all craft used on the river must be registered and licensed with us and/or British Waterways if relevant. If applicable your craft will also need to be certified through the Boat Safety Certificate Scheme.

However, if you are a member of the British Canoe Union, you may find that your membership provides you with automatic registration.

Navigation Closures & Restrictions

Closures and restrictions are advertised locally and can also be found on our website. Every endeavour is made to keep this information up-to-date, however, there may be times when sites have to be closed or restricted in emergencies.

Boat Watch

The Boat Watch scheme has been set up in several counties to help tackle increasing levels of boat-related crime.

To be part of the Scheme all you have to do is report every incident of crime and disorder you experience or witness on the waterways and display the Boat Watch sticker prominently in your boat.

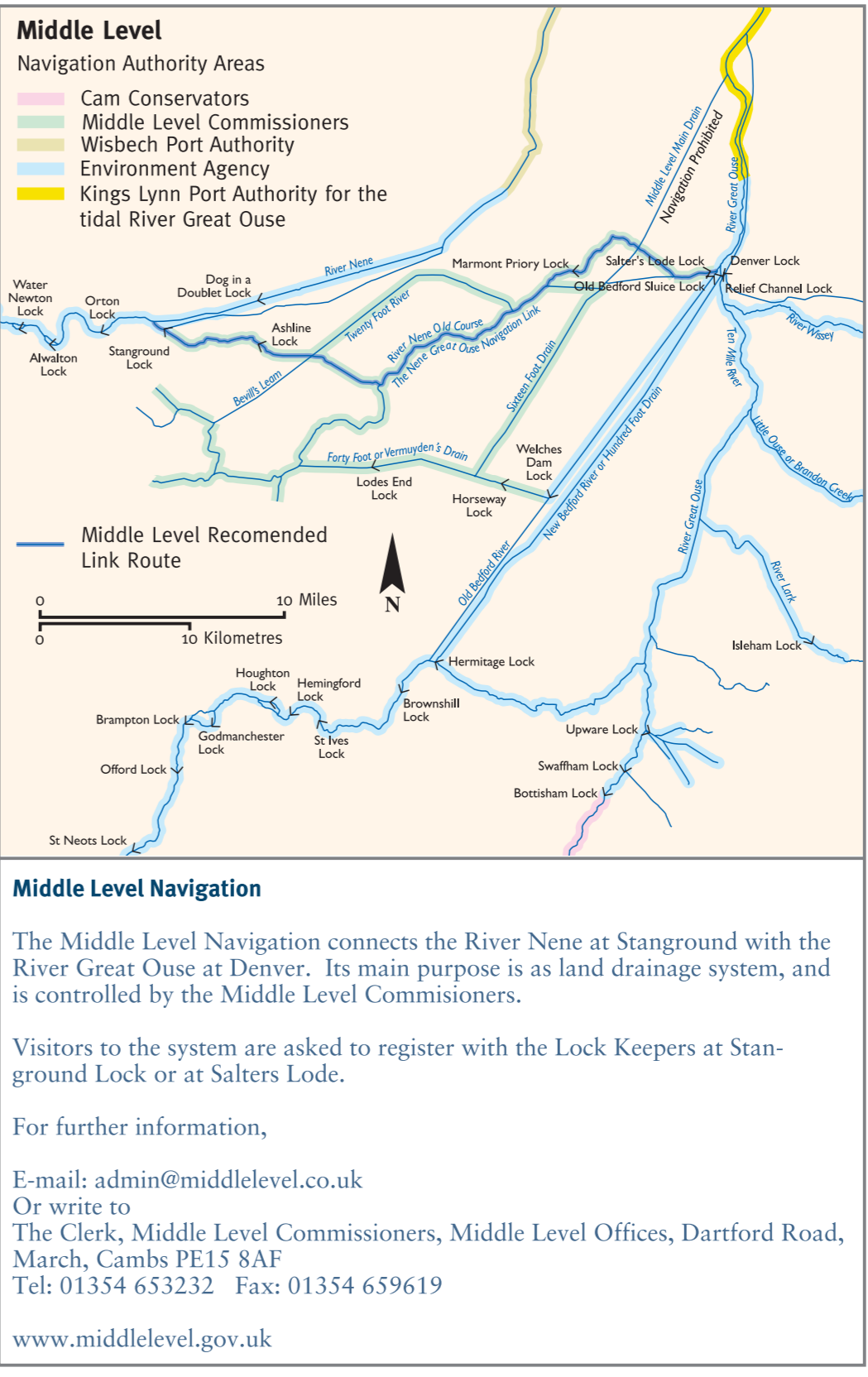
The more the police and partners know about crime happening on the waterways, the more resources will be applied to tackle it and prevent it. Displaying the Boat Watch sticker shows potential thieves that boat owners in Cambridgeshire are united in the fight against boat related crime.

How to contact the local police:

In an emergency:
 When a life is in danger or a serious crime is being committed, always call 999

For all non-emergencies:
 For calls not requiring immediate Police attendance or any other enquiry (Please mention you are a Boat watch member when you call)

Cambridgeshire Constabulary 0845 456 4564
 Bedfordshire Police 01234 841212
 Norfolk Constabulary 0845 456 4567
 Northamptonshire Police 08453 700700



The River Nene



a guide for river users

This map is based upon Ordnance Survey material with the permission of Ordnance Survey on behalf of the Controller of Her Majesty's Stationery Office © Crown Copyright. Unauthorised reproduction infringes Crown Copyright and may lead to prosecution or civil proceedings. Environment Agency, 190025380, 2007.